

TACHOGRAPH DATA MANAGER: AUTOMATIC COLLECTION OF TACHOGRAPH AND DRIVER DATA



Tachograph Data Manager makes it possible to automatic collection and storage of tachograph data. The data is sent directly to the cloud based user portal and analysis service, giving you overview of the work flow and the saved data.

Automatic collection of tachograph data

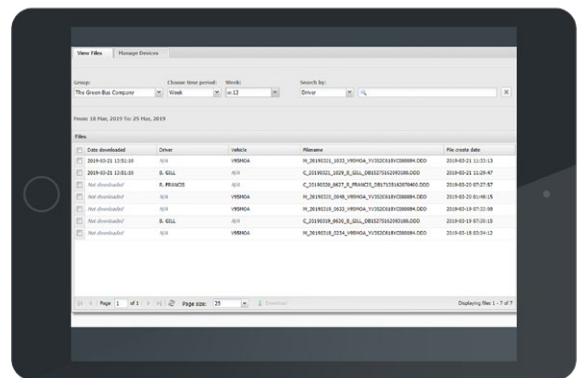
The data will be copied from both the tachograph and the driver card at prescribed intervals. The tachograph data no longer needs to be collected manually. Every thing will be automated through our servers. If you have a third-party analysis service - that we support, you can choose to enable uploading to this service via our cloud-based Tachograph Data Manager portal, where you can then follow the upload status of the current data. All data is made available via the portal, giving you an extensive overview of received files and their status.

One user portal – two views

The portal offers two views: one for if you have a registered account with an analysis service - that we support, and one for if you do not have an analysis service. Both views offer an excellent overview of sent data. You can also easily change the name of your MIIPS C units and view their status through the portal.

KEY BENEFITS

- Automatic remote data collection
- Data storage 1 year
- Integrated with analysis service
- Better overview via the user portal
- Different views depending on your needs





How does Telia Tacograph Data Manager work?

Tacograph Data Manager is a service that runs on the Telia IoT platform and is connected via Telia IoT Edge; our powerful onboard edge processor and gateway. Telia IoT Edge delivers real-time data to drivers and to the cloud.

A Telia IoT Edge is installed in the vehicle. It communicates with your tachograph equipment - that has activated remote download. The unit then sends the data to a cloud-based server solution via the mobile network - where the information is stored for a year.

Because collected data is locked to the company through a company card, you'll need to register your company card with Telia. The tachograph data is then sent to Telias server solution at regular intervals and the driver data is sent according to set intervals - while the driver is driving.

For better control over collected data, you can access the data files via the Tacograph Data Manager portal, where you can see the date the file was created. You can also view the Telia IoT Edge unit's status and when it last reported files. If you have an account registered with an analysis service, you can easily monitor the status of the upload from the server solution to the analysis service. This way, you can verify that data has been uploaded properly, and see the time of the finished upload.

You can also download files locally to your computer through the portal if you want. Search for the desired file and download it. During the search, you can select intervals of days, weeks or months, or set your own intervals. The tool shows you which files were downloaded when.



CONSOLIDATE YOUR IT SYSTEMS TO ONE OPEN PLATFORM

Telia IoT Edge is an powerful onboard edge processor and communication gateway. It is retrofittable and connects onboard systems and devices to the cloud. This makes it possible to download vehicle data, control, survey, update and configure IT-systems in the vehicle remotely. Telia IoT Edge combines robust, maintenance-free design with reliable and open software and application.

With an open platform, APIs and standards; you can easily integrate your own services - or add third party applications. So you can make the most of whatever the future brings.

TECHNICAL COMPONENTS

Onboard unit	Telia IoT Edge - MIIPS C
Web interface	Tachograph data manager portal
Requirements for your digital tachograph	Regulation 3821/85/EEC - Annex 1B, ISO: 14229-1, 15765-2, 15765-3, 16844-1, 16844-4, 16844-6, 16844-7. Activated remote download.

