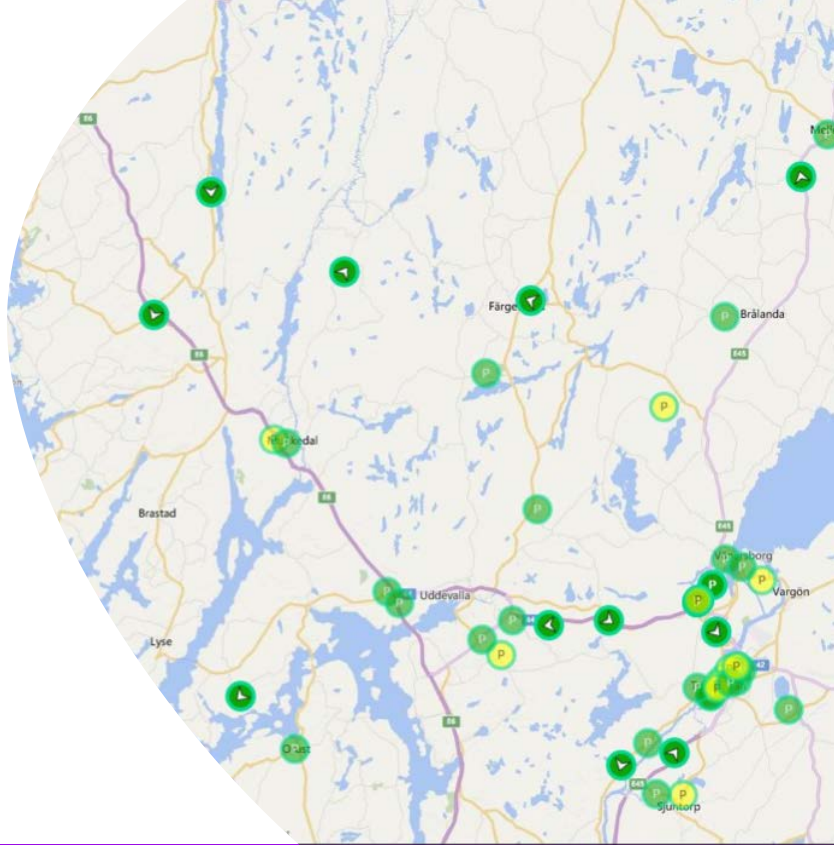




Telia Smart Transport

## TELIA POSITIONING: REAL-TIME OVERVIEW OF YOUR FLEET



Receive a comprehensible overview of the vehicles' real-time positioning: where they are, their direction and their status. Valuable information that will help you optimize your operations, redistribute your resources and timetable estimation.

### See your vehicles in real time...

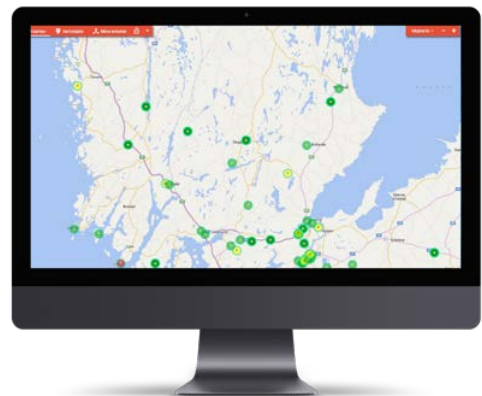
Use a Web login to access a map with an updated view of individual vehicles or predefined groups. You can clearly see the location of the vehicles, their driving direction, speed, and whether the vehicle is parked or in motion. You get a real-time, comprehensive overview of all vehicles in the field, which is extremely helpful for optimizing and redistributing resources.

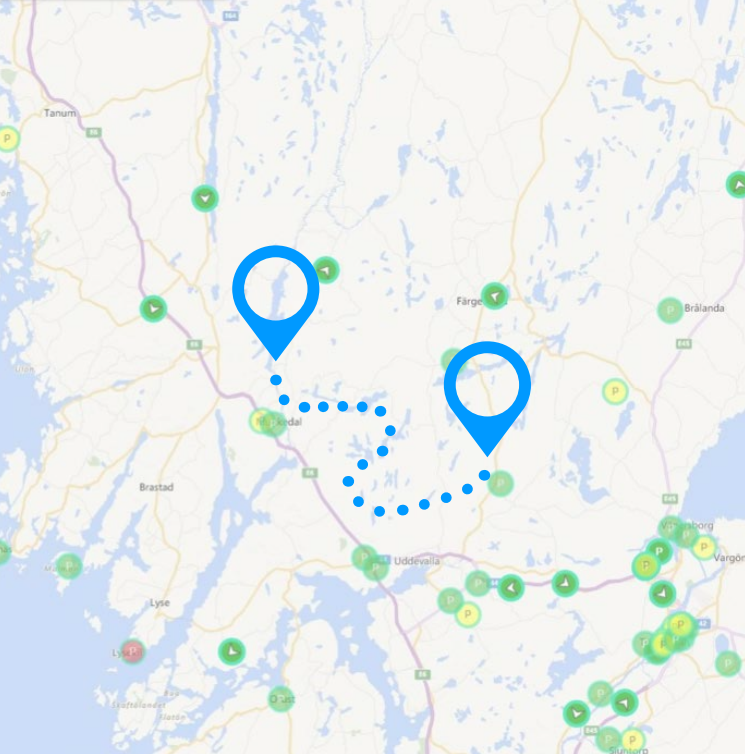
### ...or using historical data

Historical data is securely stored and quick and easy to access later when you wish to see past positions and routes.

### KEY BENEFITS

- Better fleet management and positioning information for timetable estimation
- Optimize resource distribution and usage
- Real-time positioning information
- API integrate with business support systems
- Easy start-up and an intuitive customer portal



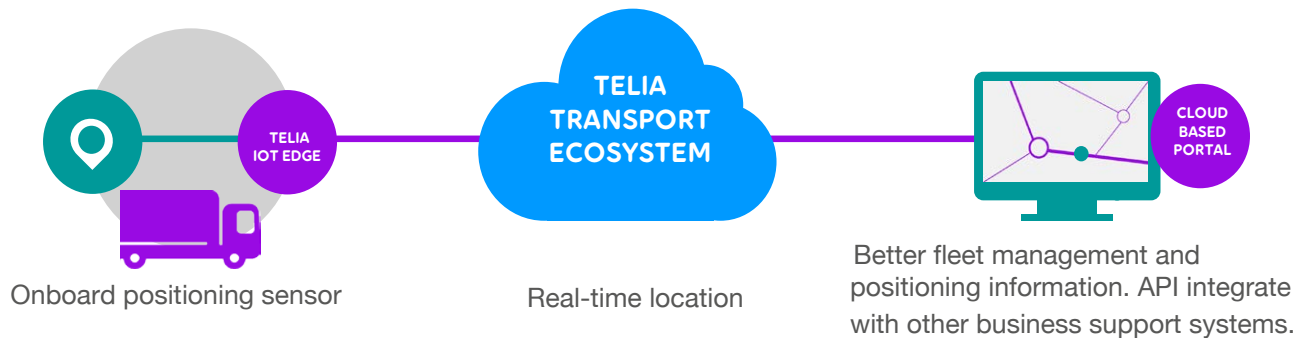


## How does Telia Positioning work?

Positioning is a service that runs on the Telia IoT platform and is connected via Telia IoT Edge; our powerful onboard edge processor and gateway. Telia IoT Edge delivers real-time data to drivers and to the cloud.

A GPS-equipped Telia IoT Edge is installed in each vehicle and registered with the vehicle ID. The position and current status of the vehicle are sent in real time over the mobile network to the Telia IoT platform, where the information is processed. If the unit's connection to the server is lost, for example due to a disturbance in the mobile network, the information is stored in the unit and transmitted when the connection is restored.

You can access the information over the cloud-based customer portal, which gives you a great overview of all your vehicles via both a map view and in list form. The flexible permissions manager allows you to indicate which resource has access to what type of information.



## OUR PLATFORM MIIPS

Telia IoT Edge is an powerful onboard edge processor and communication gateway. It is retrofittable and connects onboard systems and devices to the cloud. This makes it possible to download vehicle data, control, survey, update and configure IT-systems in the vehicle remotely. Telia IoT Edge combines robust, maintenance-free design with reliable and open software and application.

With an open platform, APIs and standards; you can easily integrate your own services – or add third party applications. So you can make the most of whatever the future brings.

## TECHNICAL COMPONENTS

**Xml-push** Reporting to third parties

**Onboard unit** Telia IoT Edge - MIIPS C

